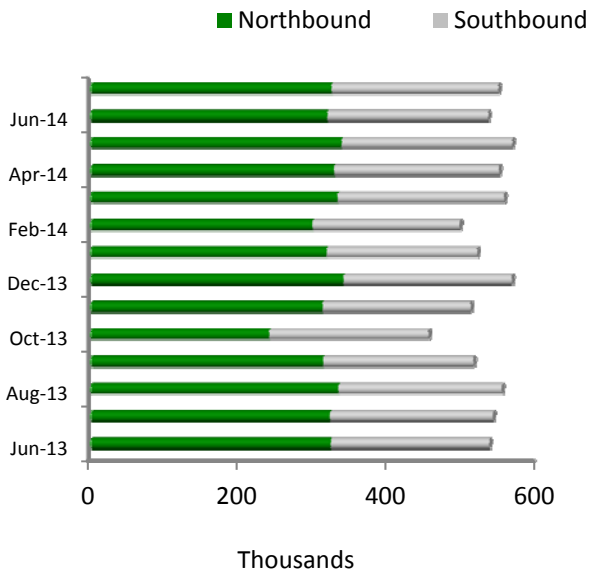


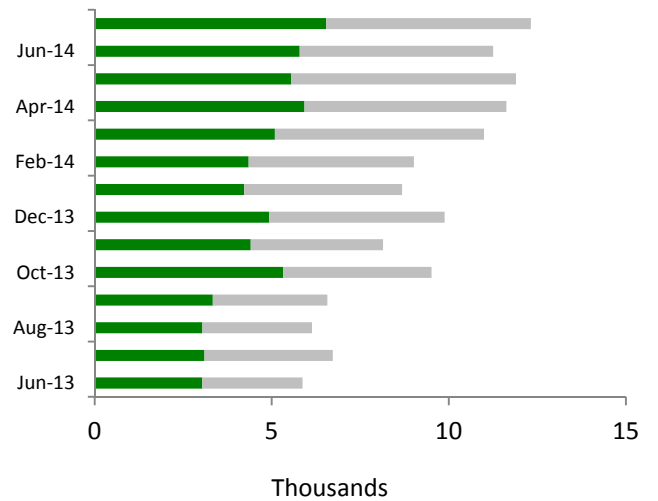
TRADE ACTIVITY

Brownsville Border Bridge Crossings

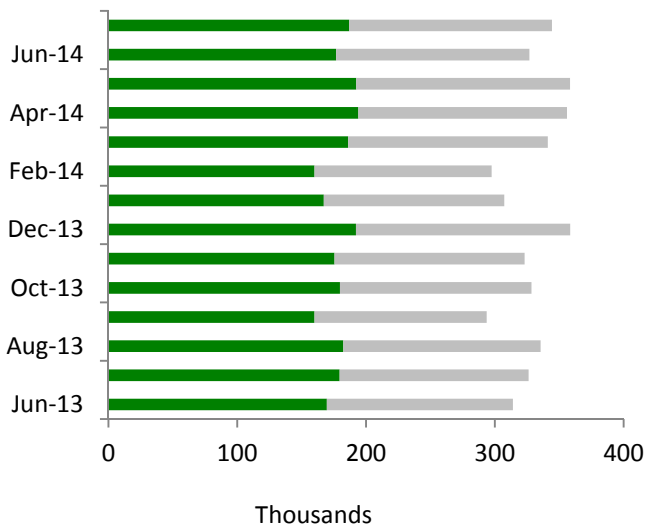
Vehicle Crossings



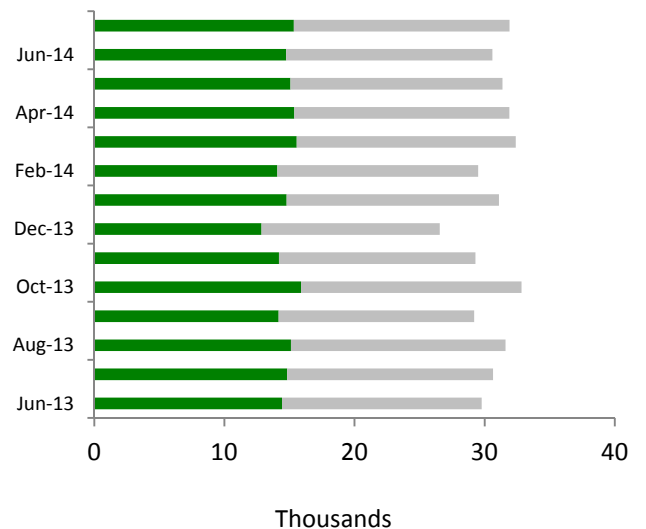
Rail Crossings



Pedestrian Crossings



Truck Crossings

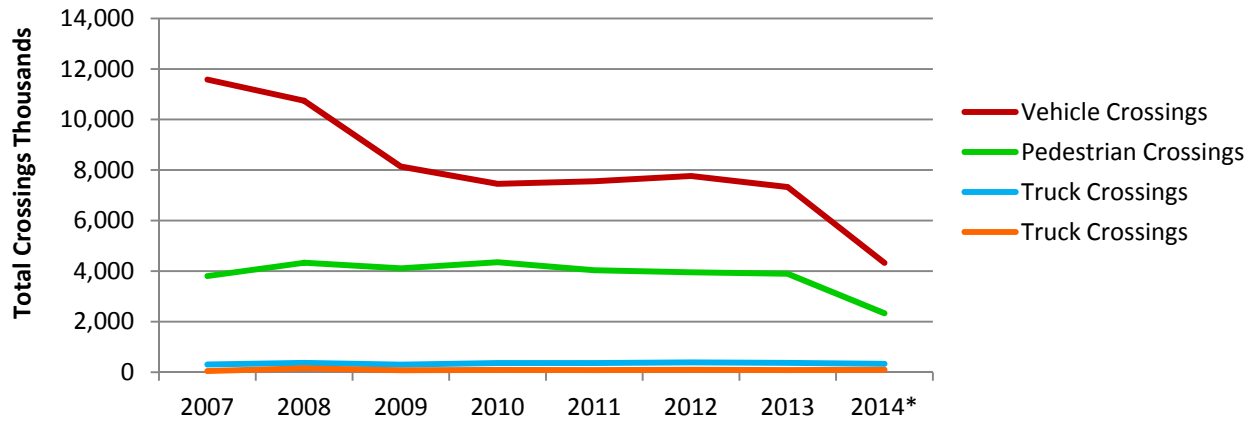


Source: Rio Grande Valley Partnership

TRADE ACTIVITY

Brownsville Border Bridge Crossings

Brownsville Border Bridge Crossings



YEARLY CROSSINGS	2007	2008	2009	2010	2011	2012	2013	2014*
Vehicle Crossings								
Northbound	7,500,014	5,512,292	4,002,230	4,074,893	3,709,400	4,487,407	4,784,585	2,585,549
Southbound	4,081,138	5,231,131	4,138,648	3,380,174	3,846,507	3,276,389	2,544,864	1,743,872
TOTAL	11,581,152	10,743,423	8,140,878	7,455,067	7,555,907	7,763,796	7,329,449	4,329,421
Pedestrian Crossings								
Northbound	2,537,734	2,493,451	2,086,622	2,366,925	2,109,895	2,104,561	2,117,807	1,263,387
Southbound	1,266,339	1,839,580	2,026,537	1,986,628	1,928,719	1,850,098	1,781,808	1,068,146
TOTAL	3,804,073	4,333,031	4,113,159	4,353,553	4,038,614	3,954,659	3,954,659	2,331,533
Truck Crossings								
Northbound	180,425	186,248	135,113	177,687	177,986	190,204	177,008	218,762
Southbound	120,645	182,414	167,717	185,590	187,714	201,189	190,815	113,829
TOTAL	301,070	368,662	302,830	363,277	365,700	391,393	391,393	332,591
Truck Crossings								
Northbound	6,536	80,147	36,134	42,453	39,398	43,044	43,632	47,681
Southbound	38,323	72,609	40,981	47,037	45,246	53,608	41,981	50,089
TOTAL	44,859	152,756	77,115	89,490	84,644	96,652	96,652	97,770

Note: *Includes incomplete data set, data up to August 2014