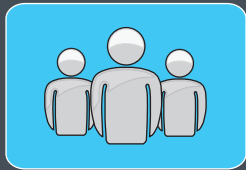




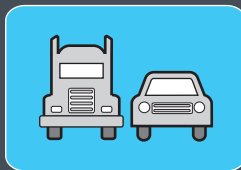
BROWNSVILLE BORDERPLEX

ECONOMIC PULSE



7.1%

Unemployment Rate*



\$ 2.7 M

Revenue from Border Crossings
at Brownsville MSA
International Bridges*



\$ 3.0 M

Sales Tax*



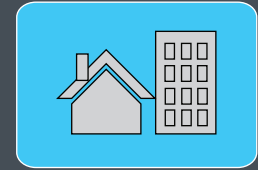
86.1

Cost of Living Index**



\$ 287 M

Import/ Export Trade Activity
at Port of Brownsville**



1,179

Housing Building Permits**

**Data as of November 2015*

***Data total for 2015*